



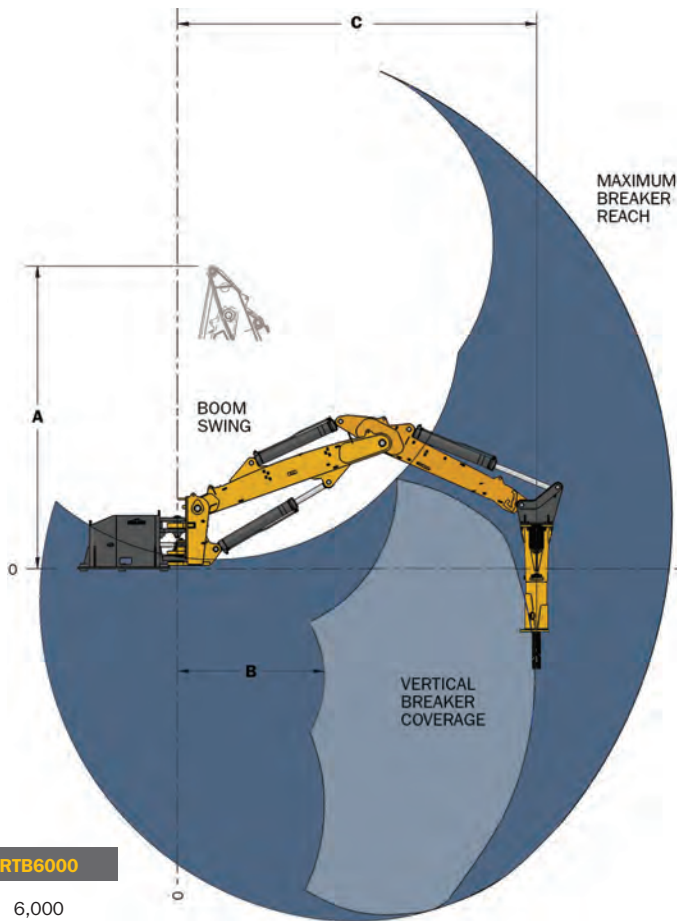
BOOM MODEL		XD3000	XD4200	XD5200
Swing arc		170°	170°	170°
Weight excluding hammer and powerpack	kg	6,895	7,144	7,530
	lbs	15,200	15,750	16,600
Breaker compatibility		RTB2000 - 6000	RTB2000 - 6000	RTB2000 - 4500
Dimension A	mm	4,877	5,283	6,147
	in	192	208	242
Dimension B	mm	2,591	2,591	3,048
	in	102	102	120
Dimension C	mm	5,029	6,248	7,671
	in	198	246	302

BREAKER MODEL		RTB2000	RTB3500	RTB4500	RTB6000
Energy class	ft/lbs	2,000	3,500	4,500	6,000
Operating weight including top mount bracket	kg	1,468	1,758	2,078	2,758
	lbs	3,236	3,875	4,581	6,080
Flow range	lpm	80 - 130	120 - 170	140 - 200	160 - 250
	us gpm	21 - 34	32 - 45	37 - 53	42 - 66
Pressure range	bar	135 - 145	135 - 145	135 - 145	150 - 160
	psi	1,950 - 2,100	1,950 - 2,100	1,950 - 2,100	2,200 - 2,300
Frequency range	bpm	450 - 800	450 - 800	450 - 750	370 - 630
Tool diameter	mm	115	125	135	142
	in	4.53	4.92	5.31	5.59
Powerpack	litre/kw	379/37	379/45	379/55	379/75
	us gal/hp	100/50	100/60	100/75	100/100

POWER PACK SPECIFICATIONS

- 379 L (100 us gal) reservoir with clean out inspection cover
- Forkway and integrated lifting lugs under complete assembly
- High pressure filter with visual indicator
- Return filter with visual indicator
- Oil level sight guage
- Low oil level shutdown interlock
- Visual temperature indicator
- High oil temperature shutdown interlock
- TEFC electric motor
- Variable displacement, load-sensed hydraulic system
- Air over oil cooler driven by TEFC electric motor
- Environmental drip tray
- Hand pump to fill hydraulic reservoir through return filter

ROCKTECH™
Rock Solid Solutions



Rock-Tech is a Canadian manufacturer of equipment designed purposely for underground mining applications. Our years of experience in mining applications have enabled us to engineer products that are safe, cost-effective, productive and reliable. Our customers include some of the world's largest mining companies.

160 Magill Street, Lively, Ontario, Canada P3Y 1K7
705.692.7625
www.rock-tech.net

- Stationary Rockbreaker Systems
- Premium Mine Utility Vehicles
- Fuel/Lubricants Storage and Handling Systems



It does one thing. Really, really well.

XD Series Stationary Rockbreaker Systems



ROCKTECH™

XD Series Rockbreakers are designed specifically for heavy duty applications.

Increased uptime. Increased safety.



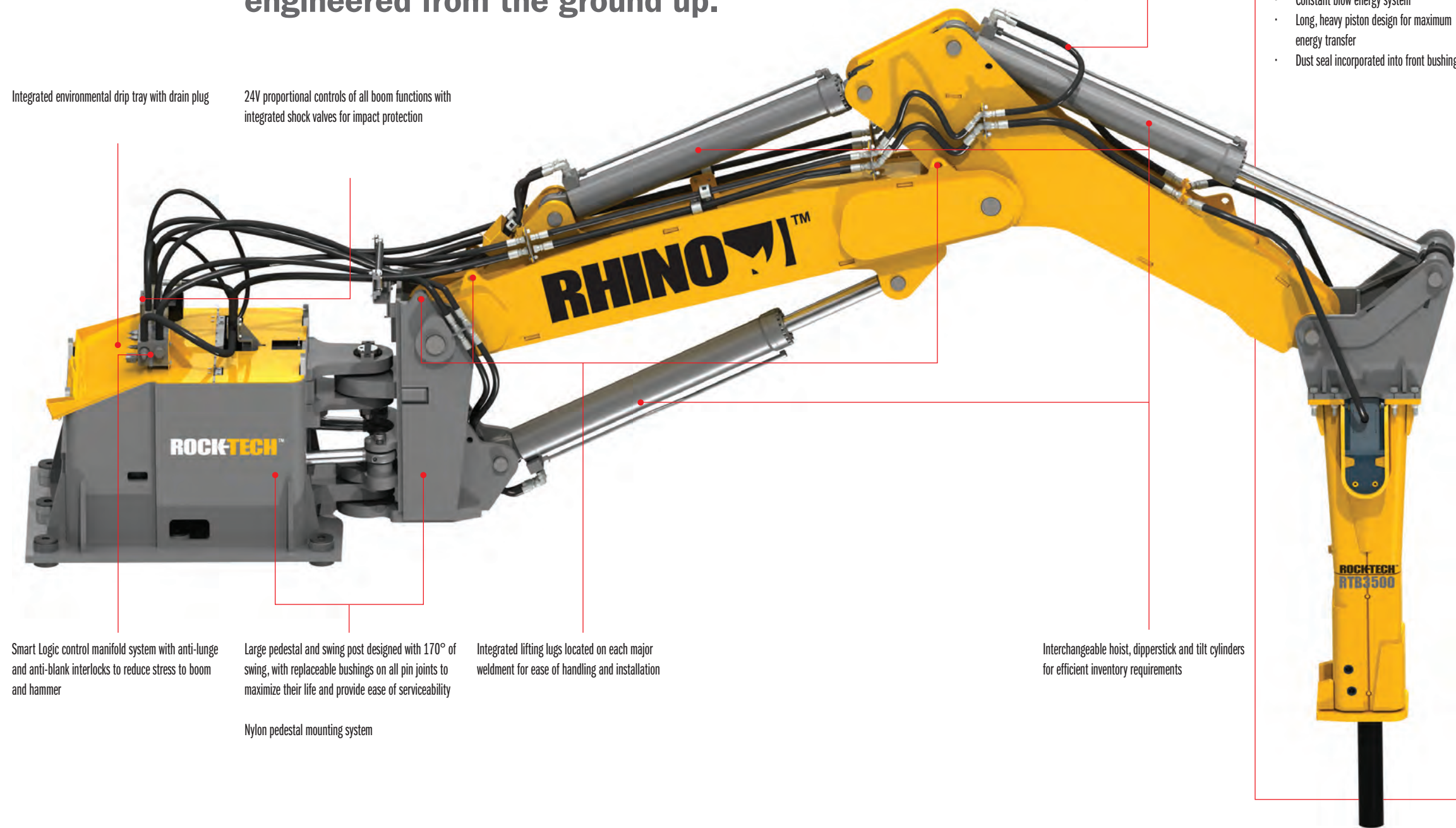
Tough situations require tough solutions.

Our Rhino XD Series Rockbreaker Systems are purposely built to handle the rigors of underground applications that are subject to torsional loading, side bending, vibration and shock loads. It shows in our choice of industry-leading components, and our attention to operator ergonomics to provide maximum efficiency, so you get the job done right the first time.

Superior reliability and productivity, engineered from the ground up.

Integrated environmental drip tray with drain plug

24V proportional controls of all boom functions with integrated shock valves for impact protection



Smart Logic control manifold system with anti-lunge and anti-blank interlocks to reduce stress to boom and hammer

Large pedestal and swing post designed with 170° of swing, with replaceable bushings on all pin joints to maximize their life and provide ease of serviceability

Nylon pedestal mounting system

Integrated lifting lugs located on each major weldment for ease of handling and installation

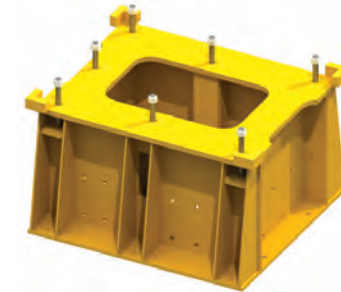
Interchangeable hoist, dipperstick and tilt cylinders for efficient inventory requirements

All hose configuration (no solid piping) for ease of field repair and to reduce parts inventory

The hammer

Every hammer includes:

- Linkless tilt design
- Heavy duty box housing
- Excellent vibration dampening system
- Hardbox 400 lower booth
- Constant blow energy system
- Long, heavy piston design for maximum energy transfer
- Dust seal incorporated into front bushing



Steel base designed to properly anchor rockbreaker system, and for quick and easy replacement of fasteners to pedestal



Powerpack (available in required local voltage) with load sensed hydraulic circuit, pressure and return filtration, and environmental drip tray



Heavy steel gauge operator cab with safety glass, sound proofing barrier, air conditioning, and intake filtration

Available options

- ANSUL automatic fire suppression system
- Central manual or automatic greasing system
- Powerpack starter panels
- Powerpack heating elements for cold weather applications
- Ergonomic suspension operator seat with joystick controls mounted in armrests
- High/low temperature shut down



Gas cylinders to assist in lifting inspection cover for ease of serviceability and added safety



ISO 9001 REGISTERED
CWB CERTIFIED